



Co-funded by
the European Union

TRUE FALSE



GAMEDIA

Project Number: 2023-1-SE02-KA220-YOU-000150524

Funded by the European Union. Views and opinions expressed are however those of the author(s) only and do not necessarily reflect those of the European Union or the European Education and Culture Executive Agency (EACEA).

Neither the European Union nor EACEA can be held responsible for them.





TRUE FALSE

Two days before the Slovakian election in September 2024, a recording went viral on social media. In it, liberal opposition candidate Michal Šimečka could apparently be heard plotting with a journalist to buy votes and rig the result. It is true or false that he did so?

FALSE

The recording was generated with AI.



TRUE FALSE

**From May till December 2023
websites hosting AI-created
false articles have increased by
more than 1,000%, ballooning
from 49 sites to more than 600.**

TRUE



TRUE FALSE

Check the article included in the evidence card number 1 and say if this statement is true or false:

Google's AI can predict if someone is a criminal based on their facial features

FALSE

Kate Crawford, an AI researcher with Microsoft Research New York, MIT, and NYU, cautioned that "(...) it's important to critically assess the problematic and unethical uses of machine learning to make spurious correlations"



TRUE FALSE

Images and photos may be generated with artificial intelligence, so it's important to not believe everything we see.

TRUE

AI-generated images can easily deceive, leading to misinformation and manipulation. We should always check the source and author of the image in order to confirm reliability



TRUE FALSE

AI-generated images rocked the stock market by suggesting that May 23, 2023, the Pentagon suffered a terrorist attack and there were a series of explosions in the proximity of the building.

TRUE



TRUE FALSE

Artificial Intelligence does not have the ability to generate credible scientific articles that represent a risk to science.

FALSE

A study published in the Journal of Medical Internet Research by Dr. Martin Májovský and colleagues has revealed that AI language models such as ChatGPT can generate fraudulent scientific articles that appear remarkably authentic.



TRUE FALSE

AI can now diagnose skin cancer

TRUE

The AI technology could reduce the number of false positives when symptoms are being assessed, meaning fewer people would undergo unnecessary treatment. It could also help reduce the overall wait times for patients who need surgery.



TRUE FALSE

Using tools that can imitate people's voices or appearances, scammers have managed to stolen billions from peoples bank accounts

TRUE

Document manipulation is increasing fast with the help of improved AI tools, and biometric verification is gradually falling victim to this trend too, according to ID verification provider Onfido in their Identity Fraud Report 2024.



TRUE FALSE

**Artificial intelligence (AI) can think
and reason like a human**

FALSE

While AI systems can perform specific tasks and make decisions based on data, they lack human-like consciousness, emotions, and intuition.



TRUE FALSE

Private browsing mode makes you completely anonymous online.

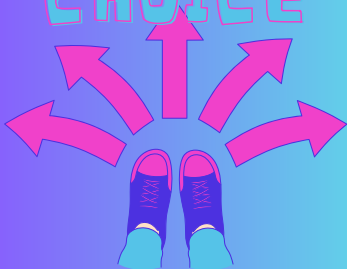
FALSE

Private browsing modes like "Incognito" in Chrome or "Private Browsing" in Firefox prevent the browser from storing local data, such as browsing history and cookies, on the user's device. However, it doesn't make users completely anonymous online as internet service providers, websites, and other entities can still track their activity.



Co-funded by
the European Union

MULTIPLE CHOICE



GAMEDIA

Project Number: 2023-1-SE02-KA220-YOU-000150524

Funded by the European Union. Views and opinions expressed are however those of the author(s) only and do not necessarily reflect those of the European Union or the European Education and Culture Executive Agency (EACEA).

Neither the European Union nor EACEA can be held responsible for them.





MULTIPLE CHOICE

What was a SAG-AFTRA* concern in relation to AI?

*Screen Actors Guild-American Federation of Television and Radio Artists

- a) it can replicate actors digitally
- b) they would like it to be more developed so they can work less
- c) they are not worried at all

In July 2023, the union went on strike over an array of labour disputes with production companies and streaming platforms. One of the greatest obstacles in negotiations was the use of artificial intelligence by major studios to duplicate an actor's likeness – an ongoing phenomenon that raises a variety of compensation and creative ownership dilemmas.





MULTIPLE CHOICE

Check the evidence card number 2 and indicate which image of Trump is fake

- a) Picture A
- b) Picture B
- c) Picture C
- d) Picture D**



MULTIPLE CHOICE

Which of the following videos shown in the evidence card number 3 may provide more reliable information about Artificial Intelligence?

- a) Video A
- b) Video B**



MULTIPLE CHOICE

Is it possible to spread fake news about medicine through AI?

- a) It is impossible for AI to disseminate news about medicine.
- b) It is: cases have been detected where profiles of fake health professionals have been created to disseminate fake news.**
- c) AI could only disseminate information related to facial care treatments.



MULTIPLE CHOICE

Throughout 2024 has Artificial Intelligence created fake news about celebrities of African descent?

- a) Yes, there are several examples of fake news focused on this group in 2024.**
- b) AI can only create fake news about unknown actors.
- c) No, AI cannot generate news or information related to the acting world.



MULTIPLE CHOICE

What of these aspects could we check to know if an image has been generated with AI?

- a) Incorrect number of fingers
- b) Too smooth to be true
- c) An uncanny sheen of objects or people and lack of details
- d) All of the above**



MULTIPLE CHOICE

Which of these jobs will appear in the future due to AI expansion?

- a) AI trainers and teachers
- b) AI machines supervisors
- c) Human-Machine Teaming Managers
- d) Option a + option c**

The jobs of the future will require a combination of technical skills, creativity, and adaptability, particularly in the context of automation and AI. Manufacturing workers must acquire new skills to operate and maintain machines and robots that are increasingly taking over manual tasks.



MULTIPLE CHOICE

What is the purpose of natural language processing (NLP) technology?

- a) To simulate human conversation and understand language**
- b) To create lifelike digital avatars for entertainment
- c) To design virtual reality environments

Natural language processing (NLP) technology enables computers to understand, interpret, and generate human language. It is used in chatbots, virtual assistants, and language translation services to facilitate communication between humans and machines.



MULTIPLE CHOICE

What is the potential impact of autonomous vehicles on transportation?

- a) Increased traffic congestion and accidents
- b) Improved safety and efficiency on roads**
- c) Decreased reliance on public transportation

Autonomous vehicles have the potential to reduce accidents and traffic congestion by eliminating human error, which is a leading cause of road accidents. Additionally, they can optimize traffic flow and reduce travel times through efficient route planning and coordination.



Co-funded by
the European Union

OPEN QUESTION



GAMEDIA

Project Number: 2023-1-SE02-KA220-YOU-000150524

Funded by the European Union. Views and opinions expressed are however those of the author(s) only and do not necessarily reflect those of the European Union or the European Education and Culture Executive Agency (EACEA).

Neither the European Union nor EACEA can be held responsible for them.





OPEN QUESTION

Reflect on the consequences about the possibility of Slovakian Progressive party leader Michal Šimečka bribing members of the country's Roma population. Why such speculations can be dangerous?

Threat to democracy as it tries to influence political elections results with false information and manipulate people's opinion by violating the right of voters to be informed.



OPEN QUESTION

What possible effects of AI can influence the environment?

AI may have both positive and negative consequences for the environment. On the one hand, it may caused an increased energy consumption. On the other hand,it could become the forefront of promoting emissions reductions.



OPEN QUESTION

Give an example of Artificial Intelligence's application.

Some examples include: virtual assistants, autonomous Vehicles, Natural Language Processing (NLP), Cybersecurity, Smart Home Technology, or applications in the healthcare, education and finance sectors.



OPEN QUESTION

Name a technological innovation that has greatly improved communication or connectivity in the past decade.

Some examples include: smartphones and 5G Technology, Social Media Platforms, video conferencing tools, Augmented Reality (AR) and Virtual Reality (VR), or Internet of Things (IoT) such as smart speakers and wearable devices.



OPEN QUESTION

**Check the evidence card
number 4. What do the
headlines of these fake news
have in common?**

The use of sensationalist and conspiratorial sentences that pretend to make people believe that there is a hidden truth. For example: the government / the pharmaceutical industry don't want you to know this!



OPEN QUESTION

Describe how artificial intelligence could lead to real risk of the destruction of certain jobs

Artificial Intelligence has a positive effect on the automation of several activities in the productive sector, which allows cost reductions, but it also has an impact on the generation of employment or the destruction of jobs. These effects are variable and depend on each region.



OPEN QUESTION

Describe how Artificial Intelligence can contribute to the development of critical thinking among young people

It depends on the use that we make from it. If we use it in the correct way, it may help to develop critical thinking.

AI can be an asset in developing critical thinking skills in young people but careful management by trainers and teachers is required. A balanced approach that takes advantage of AI's strengths while being aware of its limitations is necessary to cultivate strong critical thinking skills among students.



OPEN QUESTION

Which industries have been the most impacted by AI? Mention at least one.

Possible answers include: Insurance and Finance, Healthcare, Industrial and energy sector, Education and training, Security and surveillance, Human Resources



OPEN QUESTION

Name one of the potential negative effects of AI on the environment

Possible answers are: The energy consumption, Carbon footprint, Electronic Waste Disposal

As datasets and models become more complex, the energy needed to train and run AI models becomes enormous. This increase in energy use directly affects greenhouse gas emissions, aggravating climate change.



OPEN QUESTION

Take a look to the pictures in the evidence card number 5 and analyse them. Are they real or generated by AI?

They have been generated by Artificial Intelligence



Co-funded by
the European Union

ACTION CARD

GAMEDIA

Project Number: 2023-1-SE02-KA220-YOU-000150524

Funded by the European Union. Views and opinions expressed are however those of the author(s) only and do not necessarily reflect those of the European Union or the European Education and Culture Executive Agency (EACEA).

Neither the European Union nor EACEA can be held responsible for them.



ACTION CARD

Lorem ipsum dolor sit amet,
consectetur adipiscing elit, sed
do eiusmod tempor incididunt
ut labore et dolore magna
aliqua. Ut enim ad minim
veniam, quis nostrud
exercitation ullamco laboris nisi
ut aliquip ex ea commodo
consequat.

ACTION CARD

**Throw the dice
again and
keep playing!**

ACTION CARD

**You can
choose the
question type
to answer!**

ACTION CARD

**Move 2 square
ahead!**

ACTION CARD

**Move 5 square
ahead!**

ACTION CARD

**Move 2 square
back!**

ACTION CARD

**Move 5 square
back!**

ACTION CARD

Skip one turn!
The player
who picks this
card must skip
their next turn!

ACTION CARD

**Choose
another player
to remain
stuck and
skipping one
turn!**

ACTION CARD

Extra chance!
When giving a
wrong answer,
you can use this
card once for
having a second
chance to
answer.

ACTION CARD

Double Move!
The player gets
to move twice
the number of
spaces
indicated by the
dice.